

KCMO Opportunity Zones

● Priority Area: Central City

What is the Central City area?

The Central City is located in the very center of Kansas City's metropolitan area. Bisected by multiple transportation corridors such as Troost and Prospect, this area is a major economic development priority for the City. New catalytic investment is taking place within the zone through combinations of public and private financing. This primarily residential area has vast opportunities for new development, particularly mixed usage and single family housing. The new MAX rapid transit line ensures easy access to the resurgent commercial opportunities within the zone, as well as the greater metropolitan area. Local sales incentives such as the Central City Sales Tax area ensure a forward commitment from City officials to continue investing in the Central City region.

Community Development

The Central City area is a promising neighborhood with a rich history and room for massive growth. Multiple investments have been made in this community including but not limited to:

The Morningstar Baptist Church established a Youth and Family Life Center, designed to provide community outreach through tutoring, job skill training, counseling, and more. The KCPD East Patrol Station and Crime Lab was the result of a \$74 million investment into the Central City area.

The addition of the Troost MAX rapid transit line has provided faster and more frequent transit access for many residents within the Central City area. The transit authority (KCATA) will add another line, Prospect MAX, in the coming years.

UNI, a nonprofit organization, founded in 2012 is dedicated to breaking the cycle of poverty in this area and the City at large by helping to build healthy neighborhoods that enable all children and families to succeed and thrive.

The HEDC (Hispanic Economic Development Corporation), has provided 692 business counseling sessions for businesses and individuals located in Jackson County, along with micro-lending and other financial services.

For more information on highlighted projects, investments, and initiatives, feel free to visit the links below:

- [Morningstar Life Center](#)
- [Troost MAX \(Rapid Transit\)](#)
- [Choice Neighborhoods](#)
- [East Patrol Station](#)
- [HEDC](#)
- [UNI](#)

Others Are Already Investing

Between 2010-2017 private investment in the Central City area totaled \$260,903,839

Our City is investing in the Central City

Between 2004-2017 public investment in our City's infrastructure and public facilities totalled more than \$700,000,000. In the Central City that means:

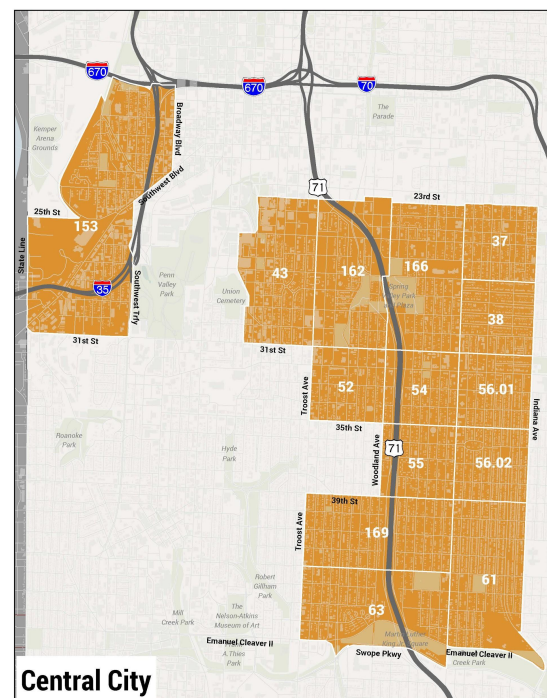
- Better Roads
- Better Bridges
- Better Transportation
- Smart City Technology
- Bikeability
- Housing Access

We can help you invest in the Central City!

Kansas City Missouri has a number of economic development incentives available in this area, including:

- [2 Tax Increment Financing Areas](#)
- [5 Chapter 353 Area](#)
- [4 Planned Industrial Expansion Areas](#)
- [16 Urban Renewal Areas](#)
- [Central City Economic Development Sales Tax](#)
- [UNI Targeted Areas](#)
- Shared Success Fund

To find out more about these incentives, visit www.edckc.com/development/development-resources/



Exploring the Central City

The **Prospect MAX** rapid transit line will be a \$54 million investment in public transportation that provides greater hours of service, trip frequency, technology integration, safety, public Wi-Fi, and jobs access along this corridor.



The **Urban Neighborhood Initiative** (UNI) established a workgroup of 45 local leaders to seek out new and innovative ways to transform vacant properties.

-<http://uni-kc.org/initiatives/vacant-to-vibrant/>

The City committed \$17 million help transform part of the Linwood Shopping center into **Sun Fresh Market**, a 38,000 square-foot full-service grocery store, part of a greater effort to improve the shopping center and adjacent area.



The **Wonder Shops and Flats** in our re-emerging Troost corridor is a \$16 million mixed-use development that will boast 10,000 square-feet of commercial space and 86 apartments.