

KCMO Opportunity Zones

● Priority Area: Paseo Gateway

What is the Paseo Gateway?

This area includes a predominantly residential area bisected by several emerging east/west commercial corridors including Independence Avenue, 12th Street, 18th Street, north/south corridors including Paseo, Troost, and Prospect, and which is anchored on the west by the Paseo Gateway Choice Neighborhood and on the east by the Hardesty Commercial Complex. This zone is home to the Historic 18th and Vine District. It is generally bound by Cliff Drive on the north; 23rd St on the south; Troost Avenue on the east; and Belmont on the west.

Community Development

The Paseo Gateway area is home to a myriad of initiatives and organizations with the purpose of improving the quality of life of not only the Paseo area, but also Kansas City as a whole.

Samuel U. Rodgers Health Center focuses on providing healthcare to individuals regardless of ability to pay.

Woodland Early Learning Center hosts multiple programs such as Head Start and the Missouri Preschool Project in order to provide the beginning foundation of education for children

John "Buck" O'Neil Center Redevelopment: a transformation of the Paseo YMCA into the Buck O'Neil Education Research Center.

Urban Youth Baseball Academy: Created to empower youth ages 6-18 by providing baseball and softball, as well as social and academic opportunities to youth from underserved communities.

The Northeast Kansas City Chamber of Commerce supports and connects businesses in the area through promotion and marketing, as well as financial literacy and support.

Greater Kansas City Local Initiative Support Corporation (LISC): LISC works with both private and public entities to collaborate and achieve local goals through coordinating and reinvesting resources.

For more information on highlighted projects, investments, and initiatives, feel free to visit the links below:

- [Samuel L. Rodgers Health Center](#)
- [LISC](#)
- [Woodland Learning Center](#)
- [NE Chamber](#)
- [Urban Youth Baseball Academy](#)

Others Are Already Investing

Between 2010-2017 private investment in the Paseo Gateway totaled \$207,675,418

Our City's Investing in the Paseo Gateway

Between 2004-2017 public investment in our City's infrastructure and public facilities totalled more than \$700,000,000. In the Paseo Gateway that means:

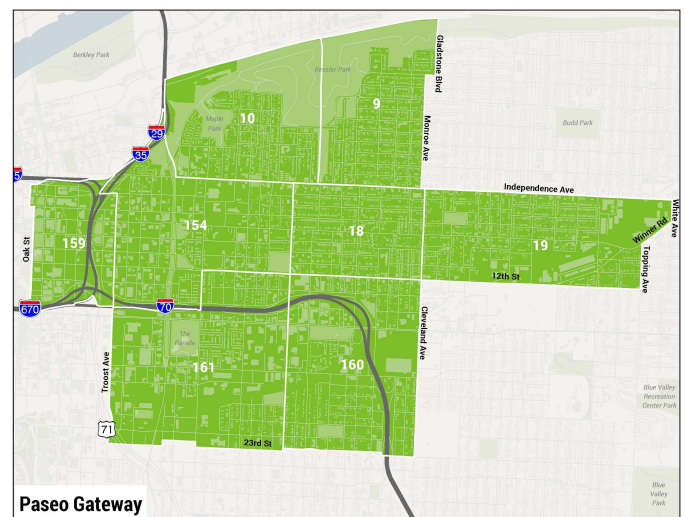
- Better Flood Control
- Better Roads
- Better Bridges
- State of the Art Community Facilities
- Transportation

We can help you invest in the Paseo Gateway!

Kansas City Missouri has a number of economic development incentives available in this area, including:

- [Tax Increment Financing Area \(TIFs\)](#)
- [6 Chapter 353 Area](#)
- [5 Planned Industrial Expansion Areas](#)
- [14 Urban Renewal Areas](#)
- [Historic 18th & Vine Redevelopment](#)
- [Central City Economic Development Sales Tax](#)
- Shared Success Fund

To find out more about these incentives, visit www.edckc.com/development/development-resources/



Exploring the Paseo Gateway

Kansas City University investing over \$60 million to renovate and reconfigure their campus. In June 2018, the school broke ground on a \$33 million, state-of-the-art medical simulation and training center.



Through \$5 million of private and federal dollars, Brinshore Development renovated a blighted apartment complex in 2017, transforming it into **Pendleton Heights** to provide 30 contemporary, mixed-income housing units just one mile from our downtown area.



The City plans to break ground in 2019 on a major redesign of **The Paseo and Independence Ave. Intersection**. Over \$8.3 million will go towards the improvements which include sidewalks, on/off ramps, access points, streetlights, medians, and safety enhancements.



The City of Kansas City and other local groups secured a \$30 million **Choice Neighborhoods** grant award to support the Paseo Gateway transformation plan. In March 2018, developers broke ground on two projects, Quinlan Place and Quinlan Row, that are expected to bring 57 apartment units and 22 townhouses to the area.